

© 2012 Mazda Motor of America, Inc.

Subject: OVERHEAD CONSOLE SUNGLASS HOLDER DOES NOT CLOSE PROPERLY	Bulletin No: 09-022/12
	Last Issued: 06/01/2012

BULLETIN NOTE

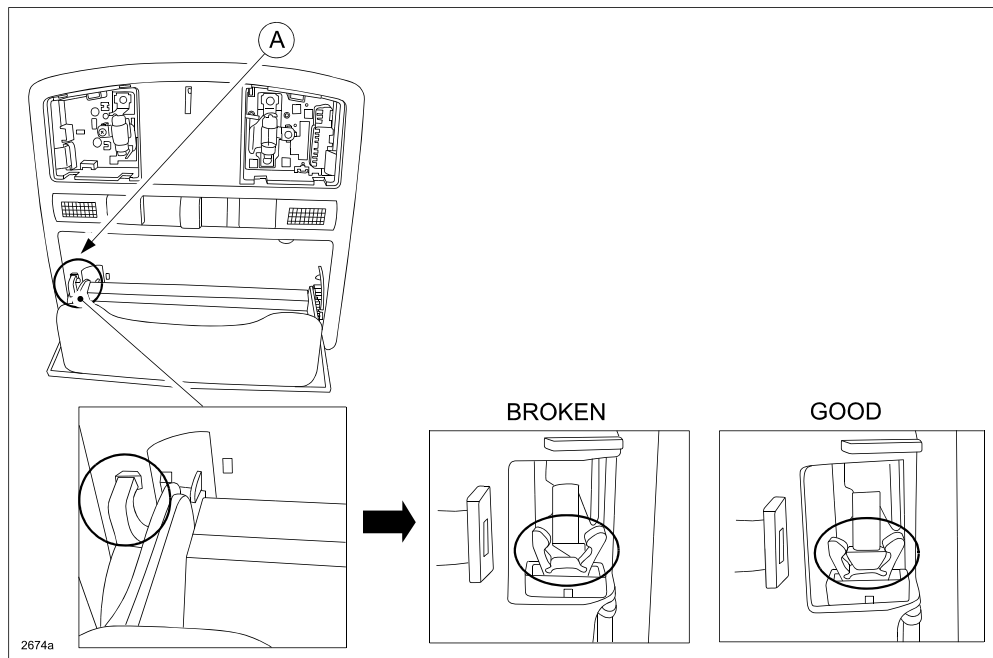
- This bulletin supersedes the previous bulletin 09-022/12 issued on 05/30/12. The APPLICABLE MODEL(S)/VINS have been revised.
- Changes are noted below in Red beside the change bar.

APPLICABLE MODEL(S)/VINS

- All 2009, 2010 and 2011 Mazda6.
- All 2012 Mazda6 vehicles with VINs lower than 1YVHZ8BH8C5M04028 AND produced on or before August 12, 2011 are applicable to this service bulletin.

DESCRIPTION

Some vehicles may exhibit a sunglass holder that does not close/lock properly. This concern may be due to a broken or damaged sunglass holder hook (A).



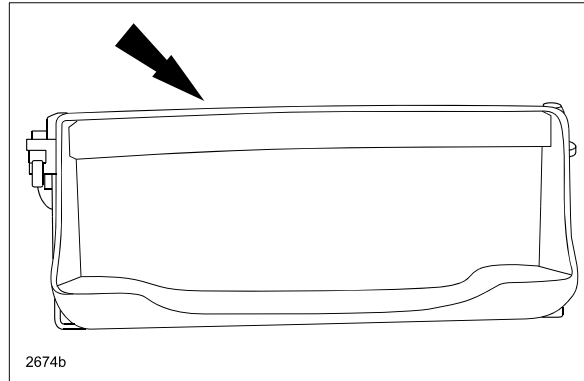
The shape and material of the hook has been changed to increase the strength.

Customers having this concern should have their vehicle repaired using the following repair procedure.

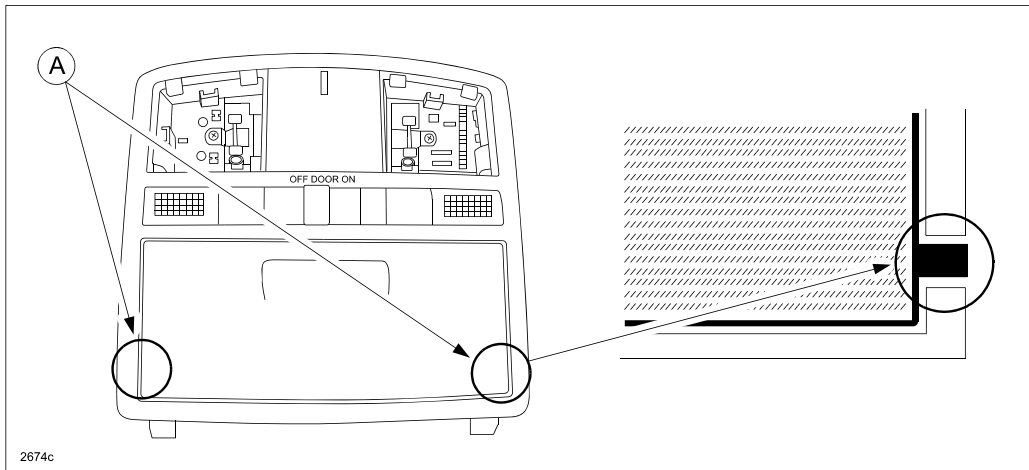
CONSUMER NOTICE: The information and instructions in this bulletin are intended for use by skilled technicians. Mazda technicians utilize the proper tools/equipment and take training to correctly and safely maintain Mazda vehicles. These instructions should not be performed by "do-it-yourselfers." Customers should not assume this bulletin applies to their vehicle or that their vehicle will develop the described concern. To determine if the information applies, customers should contact their nearest authorized Mazda dealership. Mazda North American Operations reserves the right to alter the specifications and contents of this bulletin without obligation or advance notice. All rights reserved. No part of this bulletin may be reproduced in any form or by any means, electronic or mechanical---including photocopying and recording and the use of any kind of information storage and retrieval system ---without permission in writing.

REPAIR PROCEDURE

Since the sunglasses holder has been established as the separate service part, replace it according to the procedure below.

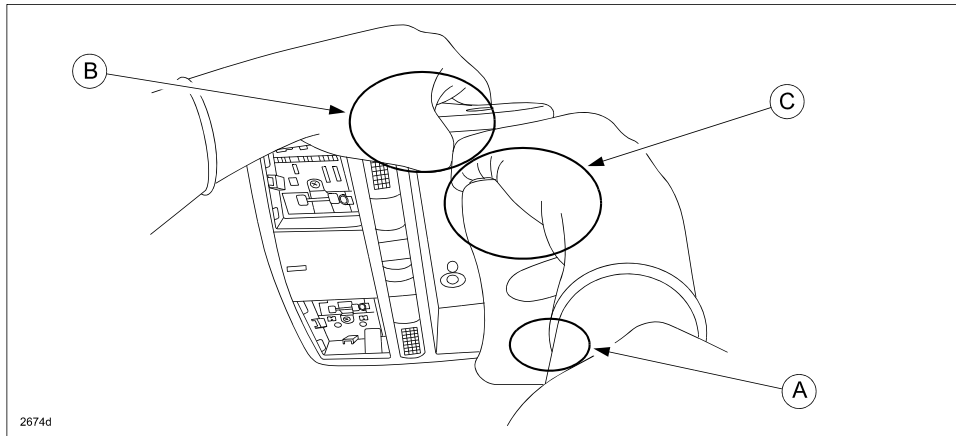


1. Verify the customer concern
2. Remove the map light from the vehicle according to the instructions on MS3 online or the Workshop Manual (section 09-18 MAP LIGHT REMOVAL/INSTALLATION).
3. Remove the sunglasses holder from the map light by pulling out the spot where the hinge pins (A) are inserted.

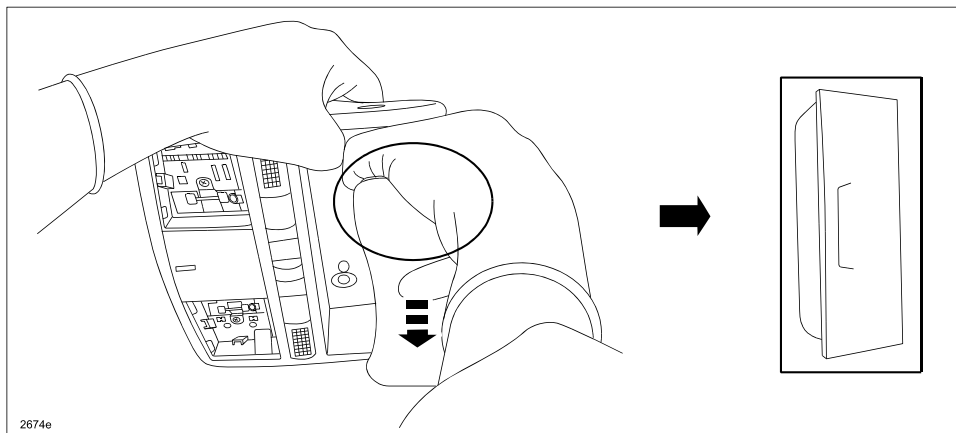


- a. Hold the map light at the other side of the hook (A) with your left hand (B) and the sunglass holder with your right hand (C).

NOTE: Wear clean gloves to ensure that parts don't get soiled.



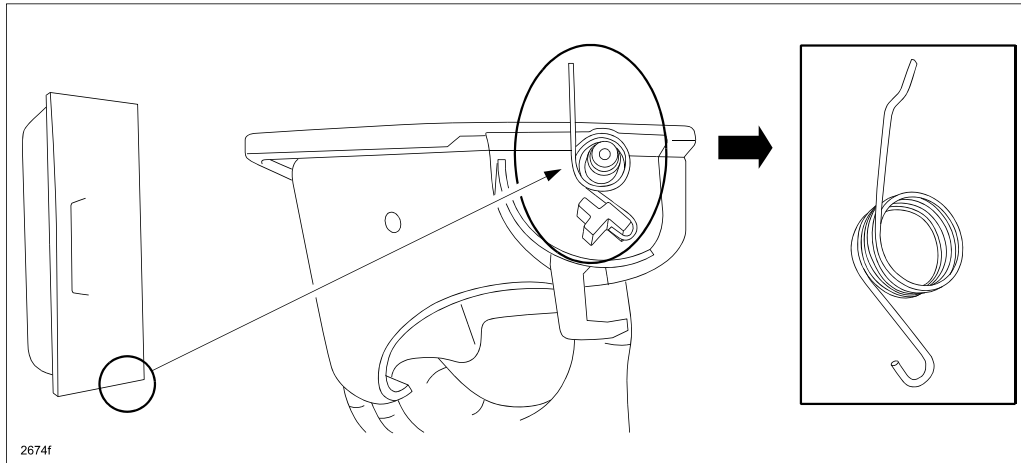
- b. Pull the sunglass holder downward with your right hand (towards the hook) and remove the sunglass holder.



c. Remove the spring from the sunglass holder.

NOTE:

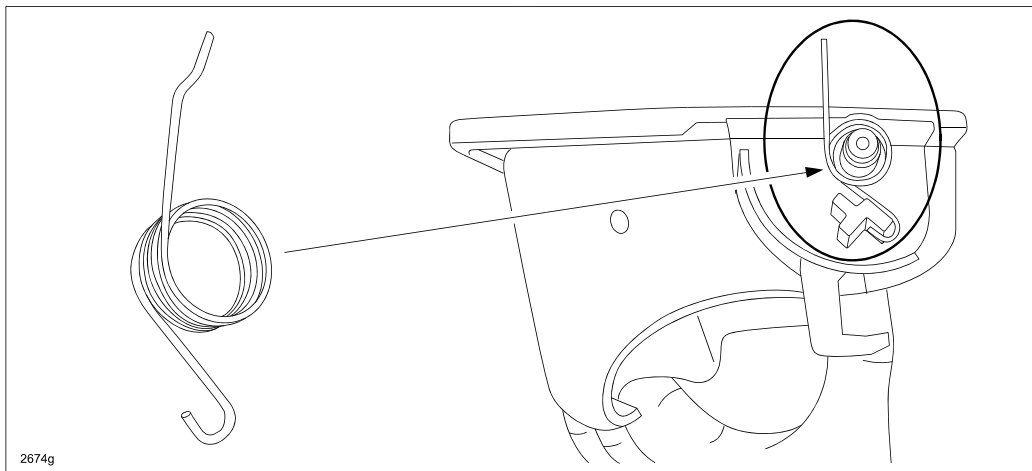
- Before the spring is removed, confirm the position and direction of the spring installation.
- The spring will be reused. Take care not to deform it or lose it.



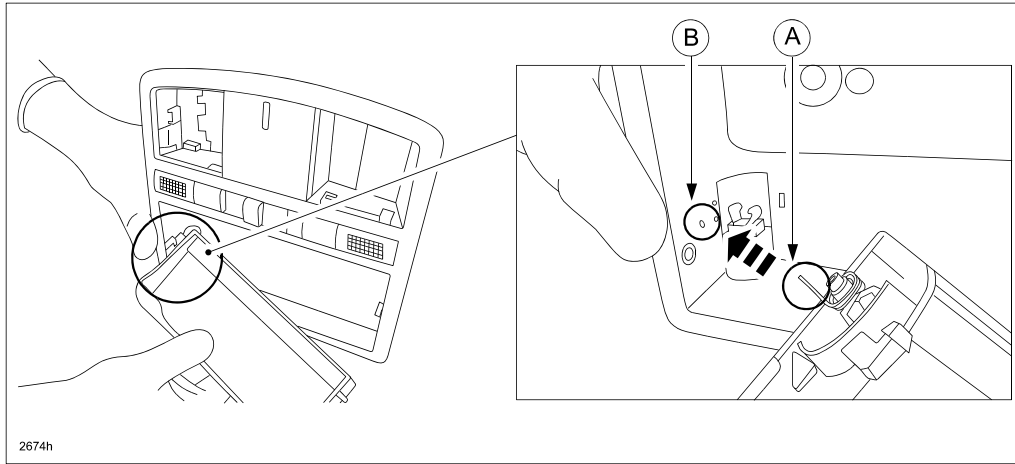
4. Install the new sunglass holder to the map light.

a. Attach the spring to the sunglass holder.

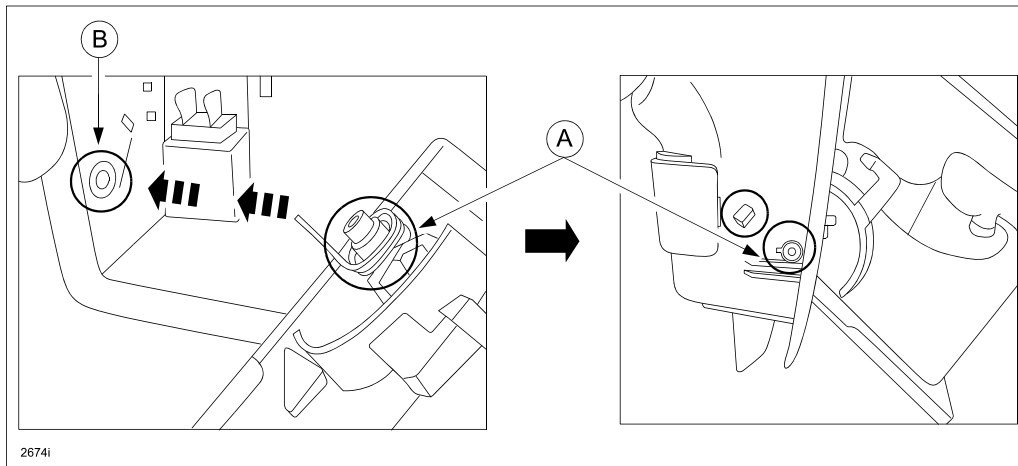
NOTE: Ensure the grease on the spring doesn't contact and soil the other parts.



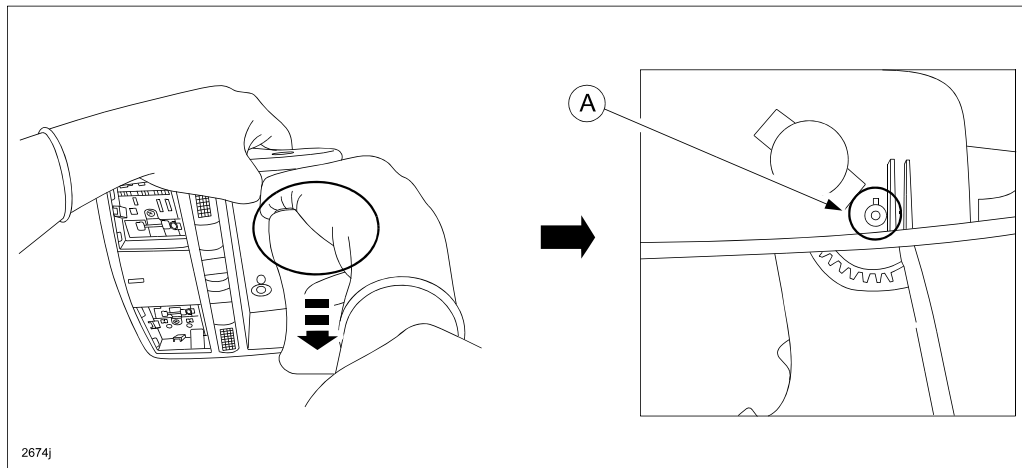
b. Pass the edge of the spring (A) through the spring hole (B) of the sunglass holder.



c. Insert the hinge pin (A) into the hinge pin hole (B).



5. With the opposite procedure for “sunglass holder removal” shown above in Step 3b, insert the hinge pin (A) on the opposite side of the hook into the hinge pin hole.



6. Install the sunglass holder.
7. Verify the sunglass holder can be opened and closed and that the sunglass holder is clean.
8. Reinstall the map light from the vehicle according to the instructions on MS3 online or the Workshop Manual (section 09-18 MAP LIGHT REMOVAL/INSTALLATION).
9. Verify the repair.

Bulletin No: 09-022/12
© 2012 Mazda Motor of America, Inc.

Last Issued: 06/01/2012

PART(S) INFORMATION

Part Number	Description	Qty.	Color
GS4E-69-976 -30	Sunglass Holder	1	Beige
GS4E-69-976 -75	Sunglass Holder	1	Gray

WARRANTY INFORMATION

NOTE:

- This warranty information applies only to verified customer complaints on vehicles eligible for warranty repair.
- This repair will be covered under Mazda's New Vehicle Limited Warranty term.
- Additional diagnostic time cannot be claimed for this repair.

Warranty Type	A
Symptom Code	42
Damage Code	9A
Part Number Main Cause	GS4E-69-976 -30 or GS4E-69-976 -75
Quantity	1
Operation Number / Labor Hours:	XXH26XRX / 0.2 Hrs.