

# Mazda<sup>®</sup>

## GENUINE ACCESSORIES

### INSTALLATION INSTRUCTIONS

**PART NUMBER:**  
0000-8T-H05

#### Rear Bumper Guard

**APPLICABLE MODELS:**  
2009 ≥ MAZDA6

#### PACKAGE CONTENTS:



**BUMPER PROTECTOR (Qty 1)**



**ALCOHOL WIPE (Qty 1)**

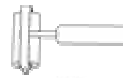
#### TOOLS REQUIRED:



**SCISSORS**



**SOFT LINT FREE CLOTH**



**RUBBER ROLLER**



**MASKING TAPE**

**⚠ CAUTION:** Make sure to follow the instructions carefully to ensure proper installation.

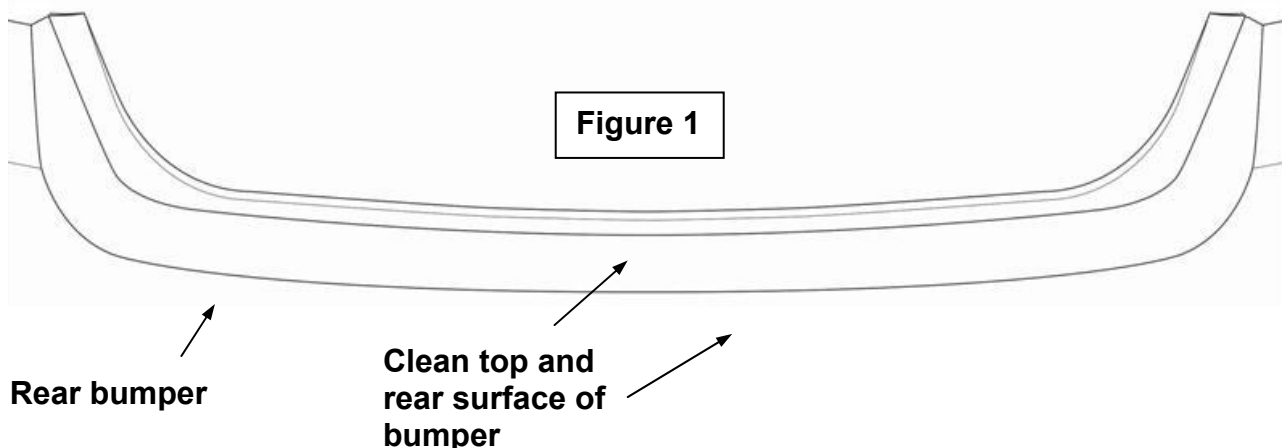
#### 0. Before Installation:

A. Read entire installation instruction before proceeding.

#### 1. Prepare Bumper:

A. Open the trunk.

B. Carefully clean the horizontal and vertical surfaces where the bumper guard will attach with alcohol. Also clean the surfaces where the templates will attach (at either end of the bumper guard up to each tail lamp assembly). Allow to air-dry.



C. Prepare and attach each template to the bumper. See pages 4 and 5 for installation template instructions.

D. Tape the six tape pull-tabs "A" [Figure 3 and 5] onto the visible surface of the bumper guard so it can be grabbed after attached to the bumper.

Paper installation template

Align template to bottom of tail light

Masking tape

Figure 2

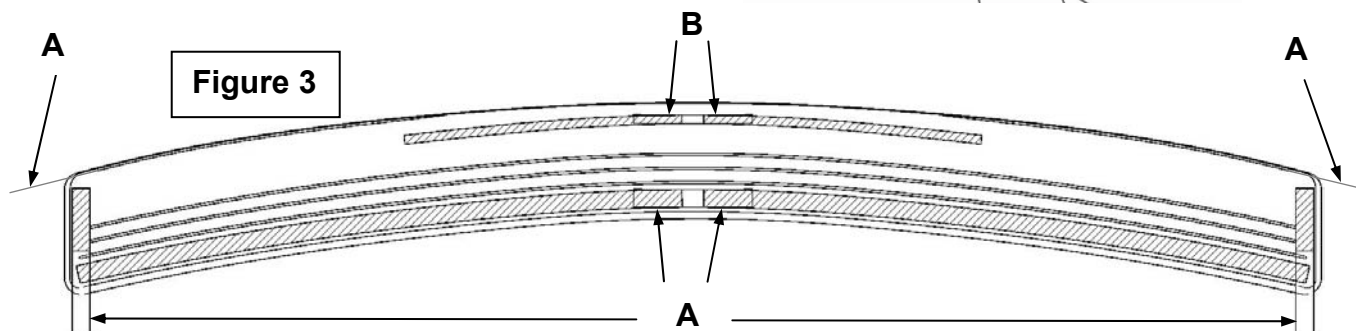


Figure 3

## 2. Bumper Protector Application

A. Remove only tape backing labeled "B" completely [Figure 3] before proceeding.

**CAUTION:** All tape on the perimeter of the part should still have tape backing present, but tabs are all taped to the top of the part. Only the two pieces of tape in the center of the part (B) should have the backing removed.



Driver side installation template

Passenger side installation template

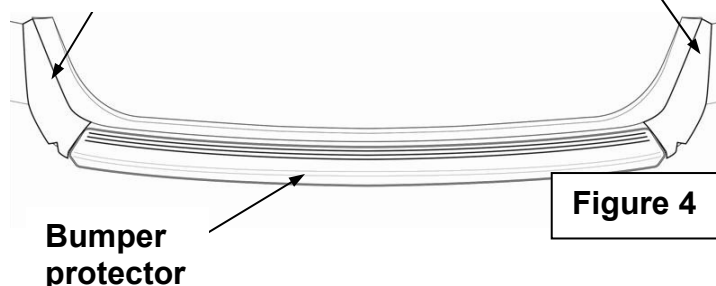


Figure 4

B. Review the cross section shown in Figure 5. Gently place the bumper guard in this position on the bumper: rear of the part rotated up, making sure it is centered between the templates. Gently rotate the rear down, keeping centered with gentle sliding against the vertical edge of the bumper. When the part is seated, press the bumper guard down near the top center in the area of the exposed tape to secure before proceeding.

C. Remove the templates.

These two pieces of tape are the only ones with backing removed for this initial attachment step.

Bumper surface

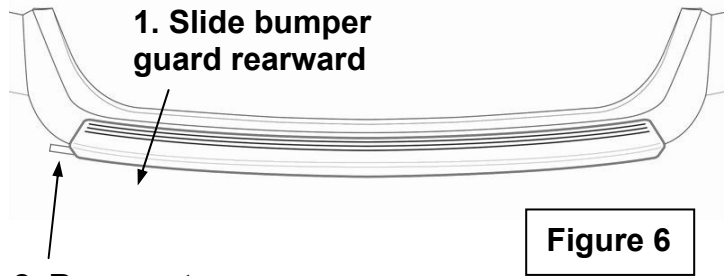
Bumper protector

Part is angled to ensure the rear edge will be tight against the bumper when tape is seated.

All tape near the perimeter (shown as "A" in Fig 3) should have tabs taped to the top surface of the part.

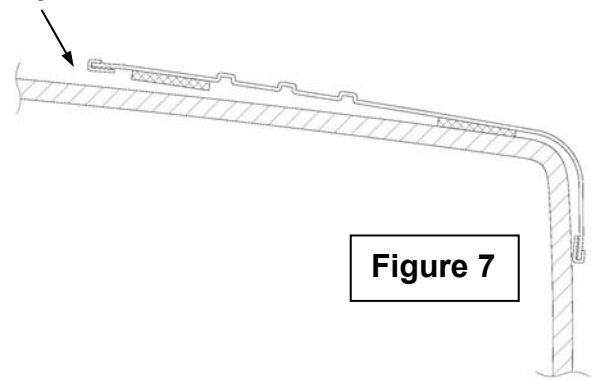
Figure 5

D. Go to one side of the bumper guard. Slide the bumper guard rearward until there is a 6mm (1/4") gap to the bumper at the end (keep the top surface flush with the bumper). Remove the tape backing from the vertical surface of the guard, then slide forward into place, keeping the vertical surface flush with the bumper. Repeat this step on the other side of the bumper guard. [Figure 6]

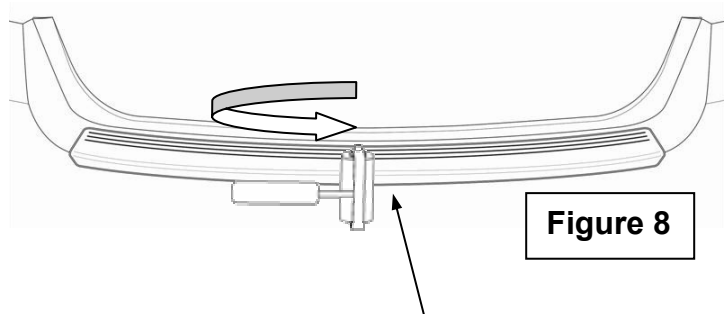


E. Rotate the front edge of the bumper guard up away from the bumper about 9mm (3/8"). Remove all four remaining tape backings from the bumper guard, then rotate down against the bumper surface. [Figure 7]

Rotate front edge of part up before removing tape liner



F. Using a roller, roll the tape on the front edge firmly against the bumper from the center-out. Roll all other areas of the guard where tape was present from the center-out. [Figure 8]



Press down all tape with roller

G. Allow tape adhesive to cure in temperatures over 50 degrees F for at least 30 minutes.

# Installation Inspection Sheet

[To be used by installation workshop]

Mazda6	Rear Bumper Protector
	2009>, All models

Inspection items after installation

Inspect the installed parts per the items listed below.

Section to be inspected	Inspection item (circle)		
	Gap & fit	Scratches/stains	Tape residue/fingerprints
Rear Bumper Protector (Steel)	O	O	O
Rear Bumper		O	O

Date (year/month/day)

VIN No.

Approved

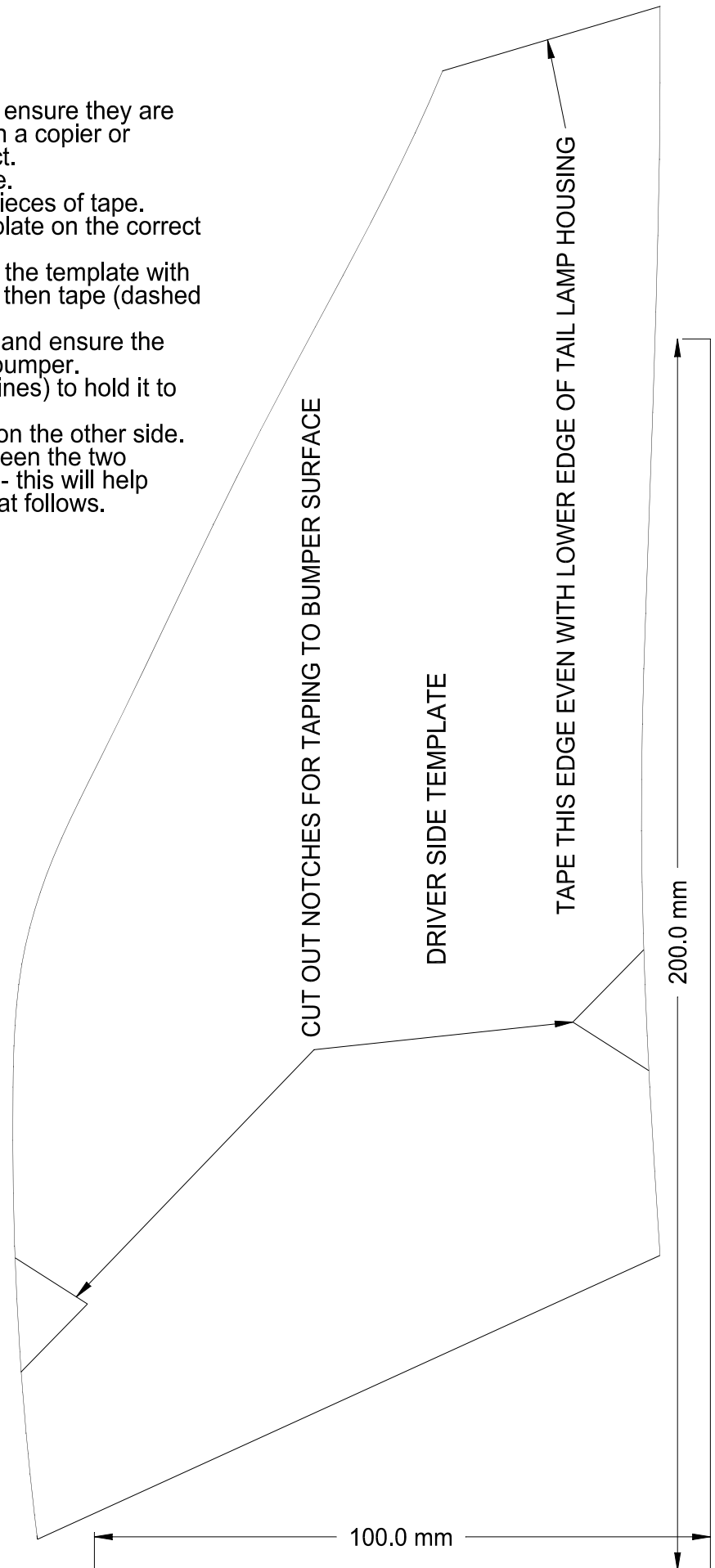
Checked

Prepared

❖ Retention period of this sheet: 12 months

## Driver Side Installation Template

1. Measure the two dimensions shown to ensure they are correct. If they are not correct, re-scale on a copier or download the templates from MX Connect.
2. Cut out the template along the bold line.
3. Cut the two "V" notches for the lower pieces of tape.
4. Ensure you place the correct side template on the correct side of the vehicle bumper.
5. Line up the upper edge (short edge) of the template with the lower edge of the tail lamp assembly, then tape (dashed lines).
6. Push the template against the bumper and ensure the front edge is seated in the crease of the bumper.
7. Place tape in each "V" notch (dashed lines) to hold it to the bumper.
8. Repeat this process with the template on the other side.
9. Make sure the Bumper Guard fits between the two templates with 0-1mm gap on either side - this will help center the guard during the installation that follows.



### Passenger Side Installation Template

1. Measure the two dimensions shown to ensure they are correct. If they are not correct, re-scale on a copier or download the templates from MX Connect.
2. Cut out the template along the bold line.
3. Cut the two "V" notches for the lower pieces of tape.
4. Ensure you place the correct side template on the correct side of the vehicle bumper.
5. Line up the upper edge (short edge) of the template with the lower edge of the tail lamp assembly, then tape (dashed lines).
6. Push the template against the bumper and ensure the front edge is seated in the crease of the bumper.
7. Place tape in each "V" notch (dashed lines) to hold it to the bumper.
8. Repeat this process with the template on the other side.
9. Make sure the Bumper Guard fits between the two templates with 0-1mm gap on either side - this will help center the guard during the installation that follows.

