

GENUINE MUD FLAP (FRONT)

INSTALLATION INSTRUCTIONS

Thank you for purchasing a Genuine Mazda Accessory.

Before removal and installation, Please thoroughly read these instructions.

For your safety, please read the contents of this booklet to properly install and use the mud flap (front).

Keep these instructions with your vehicle records for future reference.



- There are several **⚠️WARNING** and **⚠️CAUTION** sections in this booklet concerning safety when installing or removing the mud flap (front). Always read and follow the instructions in order to prevent injuries, accidents, and possible damage to the vehicle.

⚠️WARNING : Indicates a situation in which serious injury or death could result if the warning is ignored.

⚠️CAUTION : Indicates a situation in which bodily injury or damage to the vehicle could result if the caution is ignored.

- For areas indicating the tightening torque in this instruction manual, tighten to the specified torque by using a torque wrench. For areas in which the tightening torque is indicated inside parentheses (), the tightening torque is indicated as a reference value, however tightening using a torque wrench is not necessary.
- Do not modify the mud flap (front).
- Do not install the mud flap (front) in any way other than described in the following instructions.
- If in doubt, please contact your Mazda dealer to install the accessory in order to prevent errors in installation.
- If you have any questions about the use of the accessory, ask your Mazda dealer for proper advice before using it.
- Mazda and its suppliers are not responsible for injuries, accidents, and damage to persons and property that arise from the failure of the dealer or installer to follow these instructions.
- To ensure safety and reliability of the work, installation, removal and disposal work must be carried out by an Authorized Mazda Dealership.
- Be careful not to lose removed parts, and be sure that they are kept free of dirt, scratches, or damage.

PART NAME: MUD FLAP (FRONT)

PART NUMBER: DFR5 V3 450

VEHICLE: MAZDA CX-30

NOTE

To the dealer

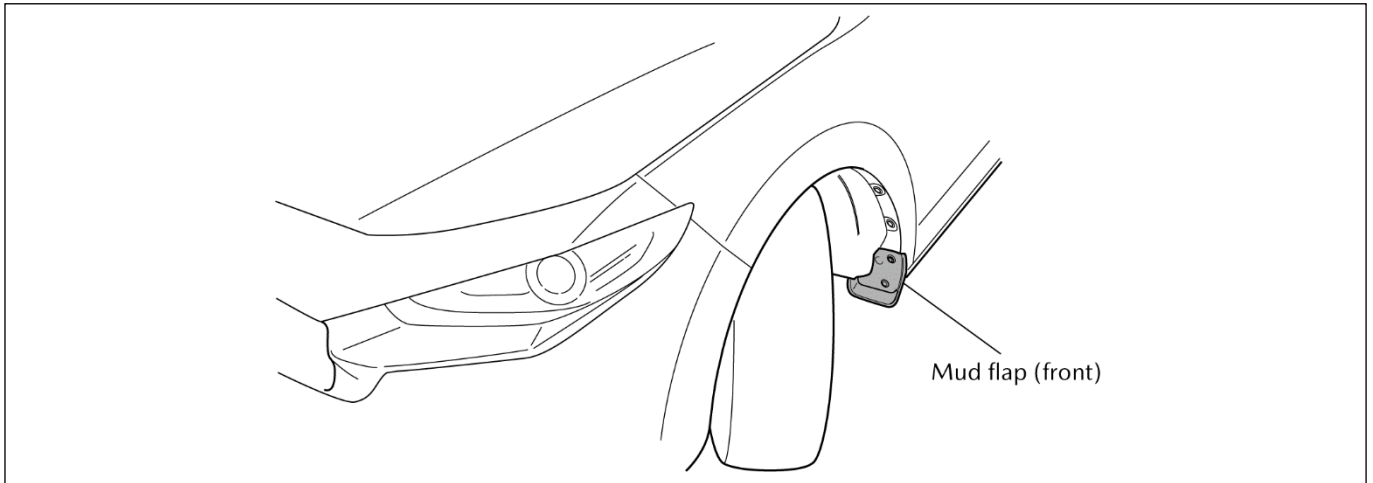
- Please turn over these instructions to the customer after installation.

To the customer

- Keep these instructions after installation. The instructions may be necessary for installing other optional parts or removal of this accessory.
- Should the vehicle or this accessory be resold, Always transfer these instructions to the next owner.

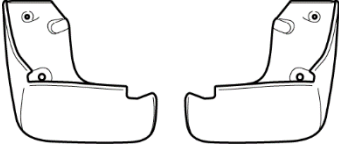
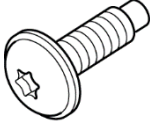
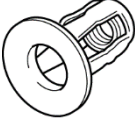
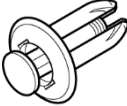


1. INSTALLATION VIEW



2. PARTS

- Before installation, verify that the kit includes all the following parts and that they are free of dirt, scratches, or damage.

Part	Part name	Qty	Part	Part name	Qty
	Mud flap (front) (RH/LH)	Each 1		Hex lobe screw	4
	Jack nut	4		Fastener	4

3. BEFORE INSTALLATION

REQUIRED TOOLS (Make sure they are at hand before starting work)

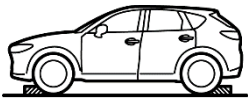
- ☆Fastener remover
- ☆Punch

- ☆Hex lobe screwdriver
- ☆Drill (φ3、φ6、φ9.5)

- ☆Round file
- ☆Jack nut tool

⚠ WARNING

Before performing any work, park the vehicle on level ground, apply the parking brake securely, and then block the wheels. If the vehicle moves while performing work, it may cause injury.



⚠ CAUTION

<p>Be sure to cover the vehicle body with protectors or mats to prevent stains, scratches and damage when removing/installing the vehicle parts</p>	<p>Using improper tools may cause damage and or broken parts. Use the correct tool for the installation.</p>	<p>Wrap protective tape around screwdrivers and fastener remover tools to prevent scratching the vehicle.</p>	<p>Put the removed parts and the parts in the kit on the protective sheet to prevent scratches.</p>
<p>【Drilling】 When drilling holes, be sure to wrap the drill bit with adhesive tape or similar to prevent drilling from going too deep.</p>	<p>【Drilling】 When drilling holes, hold the drill bit or hole saw so that it is perpendicular to the drilling surface so that the position of the hole being drilled does not shift.</p>	<p>【Drilling】 After drilling holes, file away any rough edges and burrs until the edges are smooth.</p>	

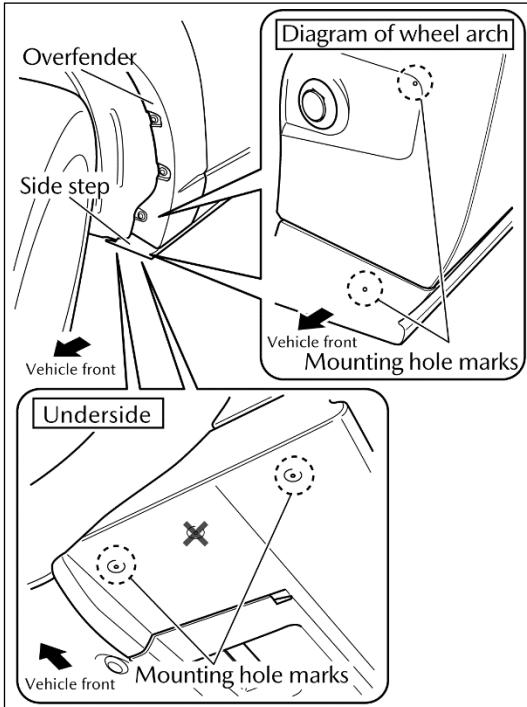
Advice

Refer to the Workshop Manual for removal and installation of vehicle parts.



4. MUD FLAP (FRONT) INSTALLATION

- The illustrations showing the work procedure are for the left side of the vehicle; the same steps should be carried out for the right side as well.



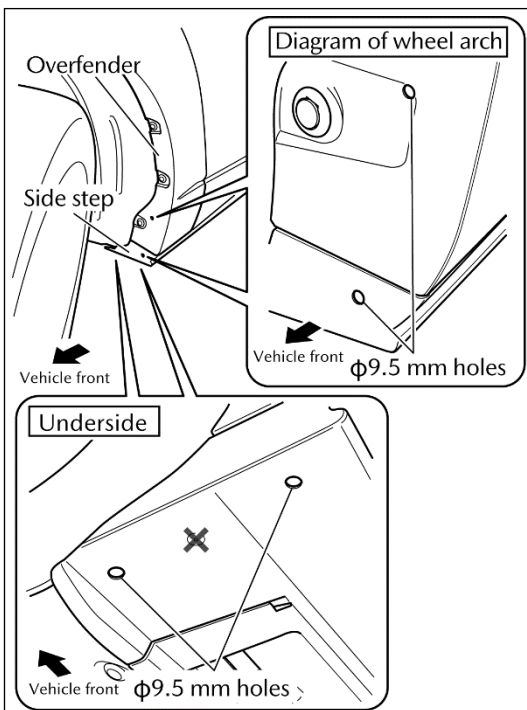
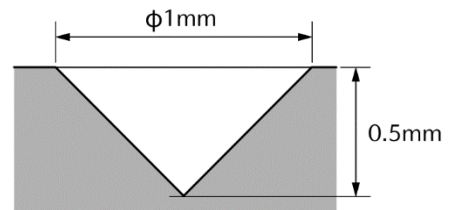
- Check the marks at the mounting holes in the overfender and the side step.
(Overfender: 1 place, side step: 3 places)

- If the angle of the steering wheel is adjusted as shown in the diagram at left, working will be easier.

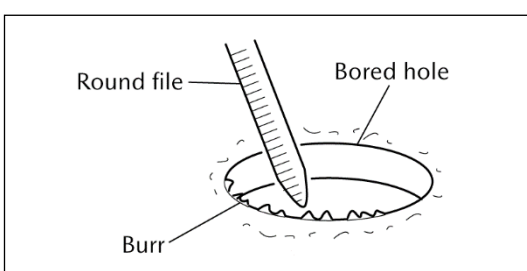
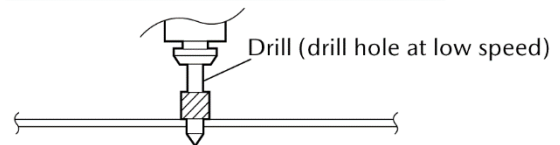
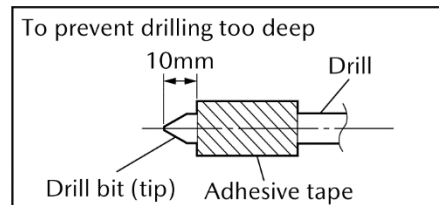
Advice

- If it is difficult to see the hollow shapes in the guide line when drilling holes, clean away any dirt, etc., and check the attachment position.

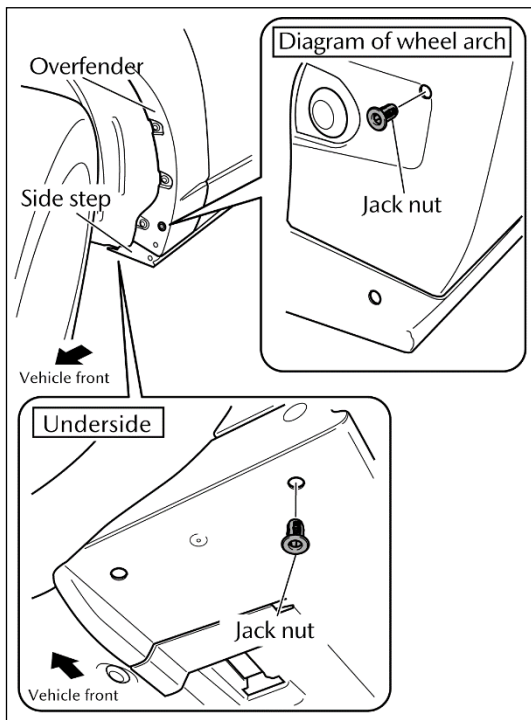
Detail of hollow



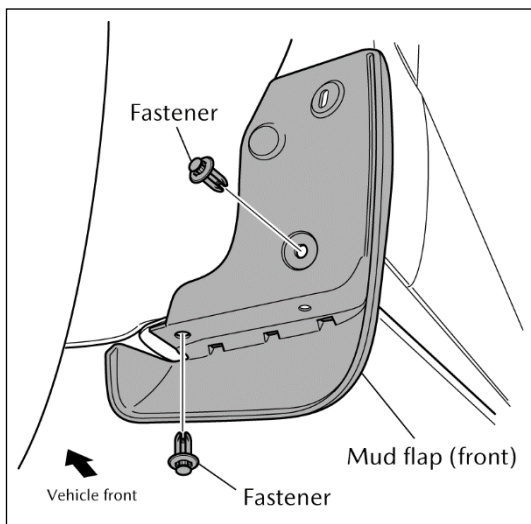
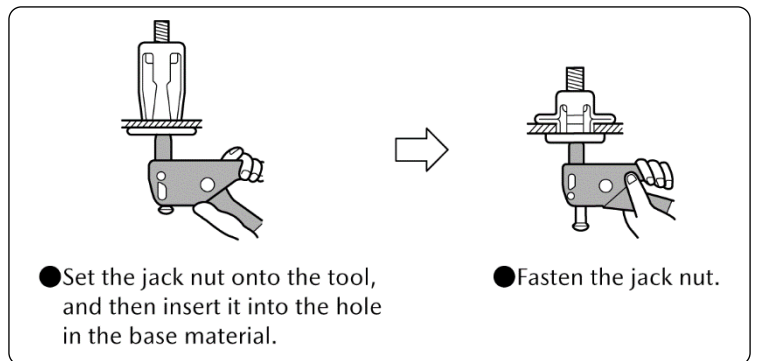
- Use the drill to drill $\phi 9.5$ mm holes in stages at the guide line locations.
 $\phi 9.5$ mm hole drilling: $\phi 3$ mm \rightarrow $\phi 6$ mm \rightarrow $\phi 9.5$ mm



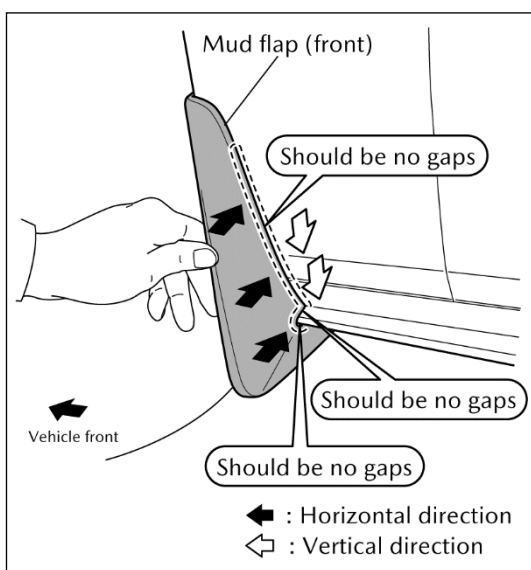
- After drilling the holes, use a file to fully remove any burrs from the holes.



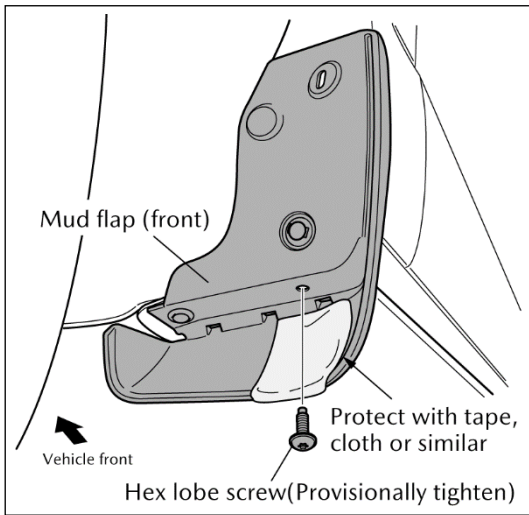
4. Insert the jack nuts into the $\phi 9.5$ mm holes shown in the diagram at left (2 places), and then secure them using the jack nut tool. (Overfender: 1 place, side step: 1 place)



5. Set the mud flap (front) against the vehicle, and then install the fasteners (2 places).

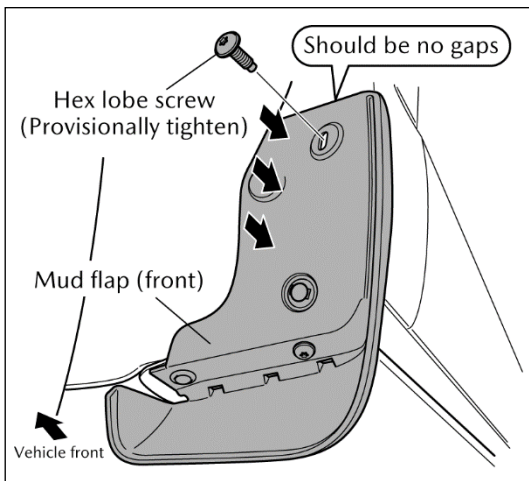


6. Press the mud flap (front) against the vehicle so that there are no gaps between the vertical reference and the horizontal reference contact surfaces as shown in the diagram at left.



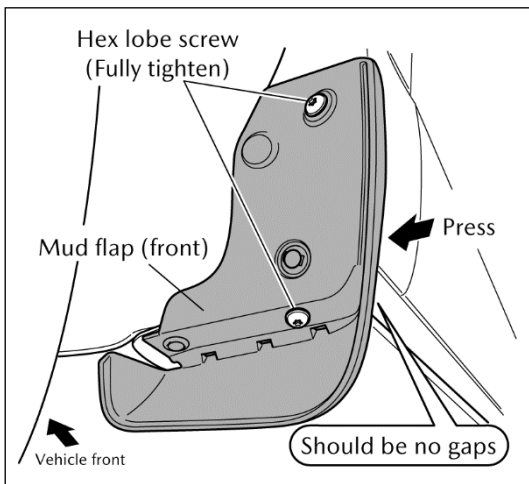
7. Install the hex lobe screw (1 place) on the underside, and provisionally tighten it.

- When installing the hex lobe screw, use tape or a cloth or similar to protect the mud flap (front) as shown in the diagram at left so that it does not become scratched.



8. Press the mud flap (front) against the vehicle so that there are no gaps between the overfender and mud flap (front) contact surfaces.

9. Install the hex lobe screw (1 place) to the wheel arch, and provisionally tighten it.



10. Lastly, while pressing the mud flap (front) so that there are no gaps, fully tighten the hex lobe screws (2 places) which were provisionally tightened before.

Hex lobe screw tightening torque: (0.8-1.2 N·m)

5. CHECKING AFTER INSTALLATION

1. Check that there are no gaps.

- If there are any gaps, loosen the hex lobe screws (2 places), follow steps 7 to 10 again while checking that there are no gaps between the overfender and the side step, and then retighten the hex lobe screws.

2. Check that the hex lobe screws and fasteners are securely installed.